



SAA-3 Series Single-Mode FC D-Shape ADAPTOR  
TECHNICAL SPECIFICATIONS

Document Number NCD-4NC1-02

First Edition            November    1994  
Second Edition        December    1995

Copyright 1994, 1995 by **Seiko Instruments Inc.**  
All right reserved.

The information contained herein shall not reproduced or disclosed to any third party without the express written consent of **SII**.

The Specifications contained herein are subject to change without notice.

**SII** is a trademark of **Seiko Instruments Inc.**

Please address any questions, comments, and suggestions to:

**Seiko Instruments USA Inc.**

Electronics Components Division  
2990 West Lomita Boulevard  
Torrance, CA 90505, U.S.A.  
Phone: 310-517-7780  
Fax: 310-517-7792

**Seiko Instruments GmbH**

OFC Division  
Siemensstraße 9b  
D-63263 Neu-Isenburg, Germany  
Phone: 06102-297-0  
Fax: 06102-297-211

**Seiko Instruments (H.K.) Ltd.**

Sales Department  
4th & 5th Floor, Wyler Center 2  
200 Tai Lin Pai Road, Kwai Chung  
N.T., Kowloon, Hong Kong  
Phone: 852-2421-8611  
Fax: 852-2480-5479

**Seiko Instruments Taiwan Inc.**

Sales Department  
5F-1, No.99, Sec. 2, Chung Shan  
Rd.  
Taipei 104, Taiwan, R.O.C.  
Phone: 02-563-5001, 523-5111  
Fax: 02-521-9519

**Seiko Instruments Singapore pte. Ltd.**

2, Marsiling Lane,  
Woodlands New Town,  
Singapore, 2573, Singapore  
Phone: 65-2691370  
Fax: 65-2699729

## TABLE OF CONTENTS

Section		Page
1.	PROVISION	1
1.1	Application Limit	1
2.	PARTS NUMBER	1
3.	GENERAL SPECIFICATIONS	2
3.1	Parts and Materials	2
3.2	Physical Dimensions	2
3.3	General Tolerances	2
3.4	Insertion Loss	3
4.	PACKING	3
5.	SHIPPING INSPECTION	3

### Table

Table 1	Parts Number	1
Table 2	Parts and Materials	2
Table 3	General Tolerance	2
Table 4	Insertion Loss and the Measurement Conditions	3

### Figure

Figure 1	Insertion Loss Measurement System	3
Figure 2	SAA-3 Adaptor	4
Figure 3 to 6	Part Dimensions	5



1. PROVISION

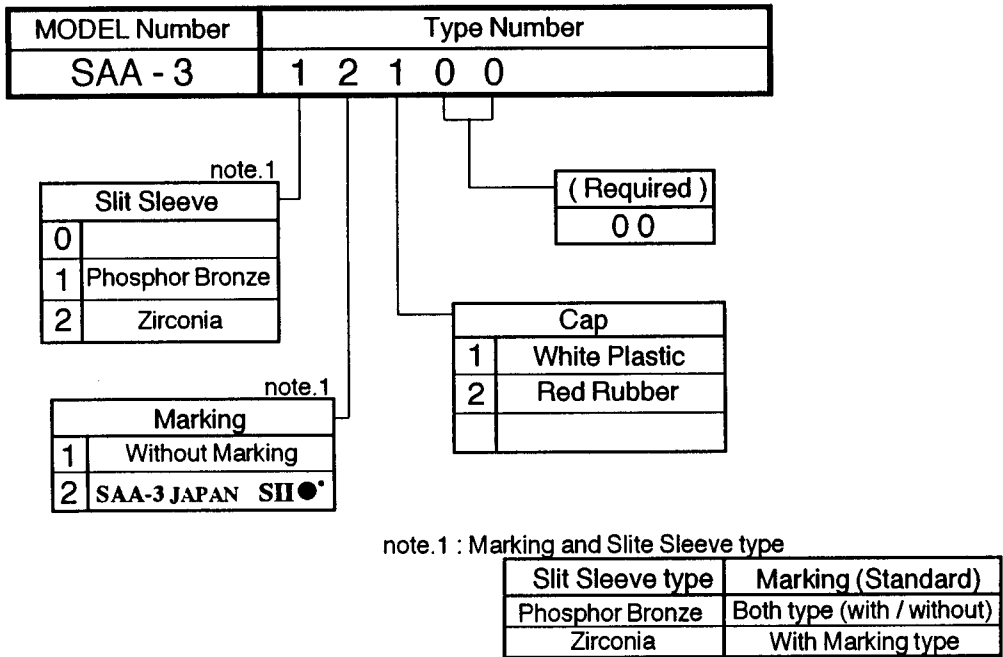
1.1 Application Limit

These specifications apply to the SAA-3 Single-Mode FC D-Shape ADAPTOR supplied by **SII**.

2. PARTS NUMBER

Parts Number of the Adaptor is Shown in Table 1.

Table 1 Parts Number



### 3. GENERAL SPECIFICATIONS

#### 3.1 Parts and Materials

Parts and the materials are shown in Table 2.

Table 2 Parts and materials

No.	Part Name	Q'ty	Material	Notes
①	Housing	1	Brass	Nickel Plating
②	Sleeve	1	Brass	Nickel Plating
③	Fitting Sleeve	1	Brass	Nickel Plating
④-1	Slit Sleeve	1	Phosphor Bronze	- -
④-2			Zirconia Ceramics	
⑤	Washerr	1	Stainless Steel	- -
⑥	Nut	1	Brass	Nickel Plating
⑦-1	Cap	2	Plastic	White
⑦-2			Synthetic Rubber	Red

#### 3.2 Physical Dimensions

Figure 2 shows the SAA-3.

Figure 3 to 6 show the part dimension.

#### 3.3 General Tolerances

Permissible deviation in dimensions without tolerance indication is in accordance with JIS B 0405 class m, as shown in Table 3.

Table 3 General tolerance (JIS B 0405 class m)

Basic size step (mm)		Permissible deviation (mm)
Over	Under	
0.5	3	$\pm 0.1$
3	6	$\pm 0.1$
6	30	$\pm 0.2$
30	120	$\pm 0.3$

### 3.4 Insertion Loss

Insertion loss of the adaptor and the measurement conditions shown in Table 4. Figure 1 shows the measurement system.

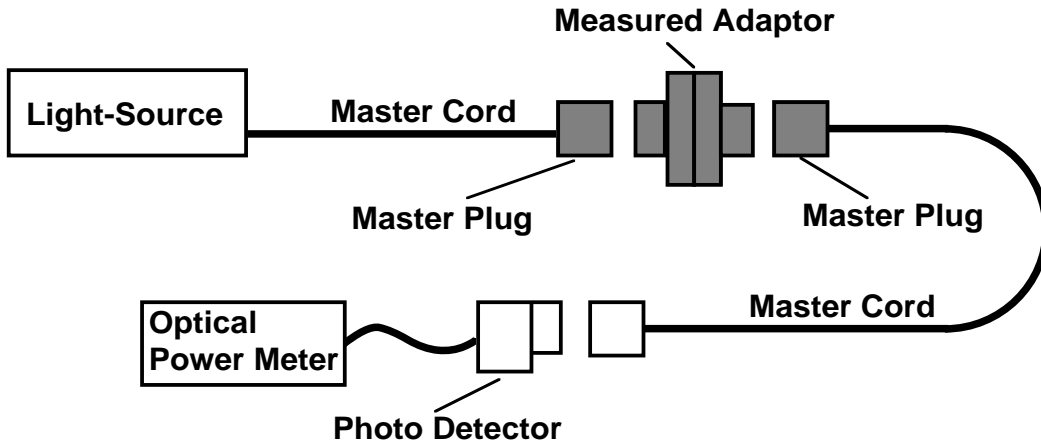


Figure 1 Insertion loss measurement system

Table 4 Insertion loss and the measurement conditions

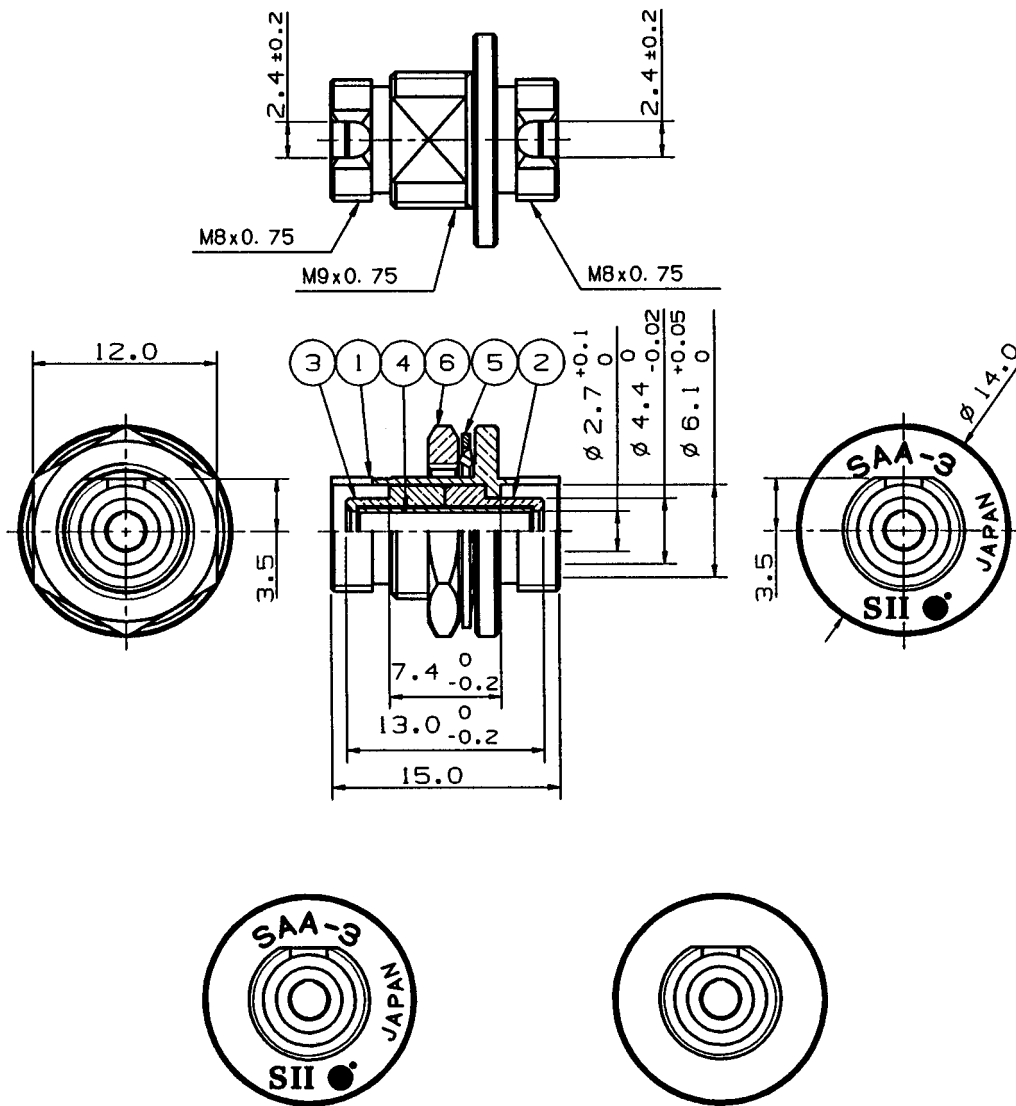
Parts Number		SAA-3 1□□00 ( Slit Sleeve : Phosphor Bronze )	SAA-3 2□□00 ( Slit Sleeve : Zirconia Ceramics )
Insertion Loss		0.7dB or Less	0.4dB or Less
Conditions	Light-Source	LD or LED	LD
	Wavelength	1.3 μm	1.3 μm
	Master Cord Terminated	Flat Polishing with Buffing	PC Polishing

### 4. PACKING

The product is packed to prevent damage during shipment.

### 5. SHIPPING INSPECTION

The insertion loss inspected before shipping.



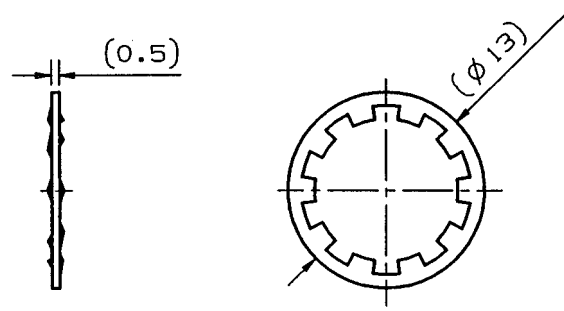
with Marking ( ROGO ) Type

without Marking ( ROGO ) Type

Unit : mm

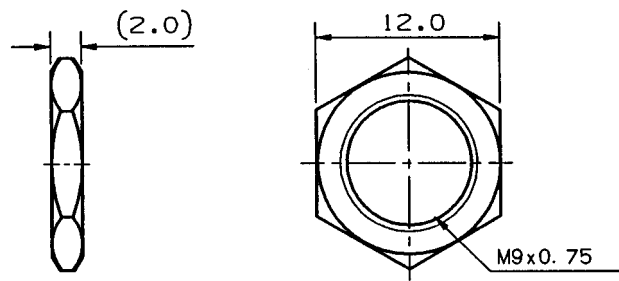
Figure 2 SAA-3





Unit : mm

Figure 3 ⑤ Washer



Unit : mm

Figure 4 ⑥ Nut

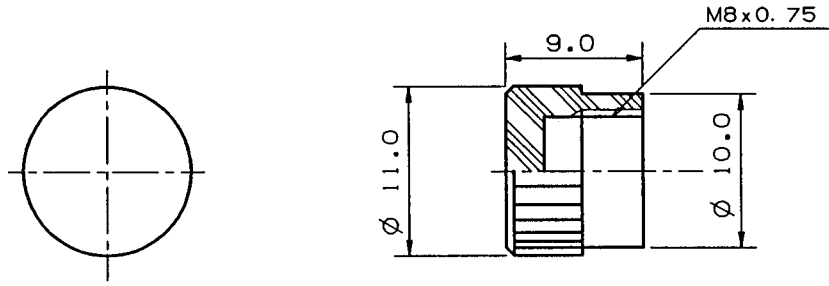


Figure 5 ⑦1 Cap

Unit : mm

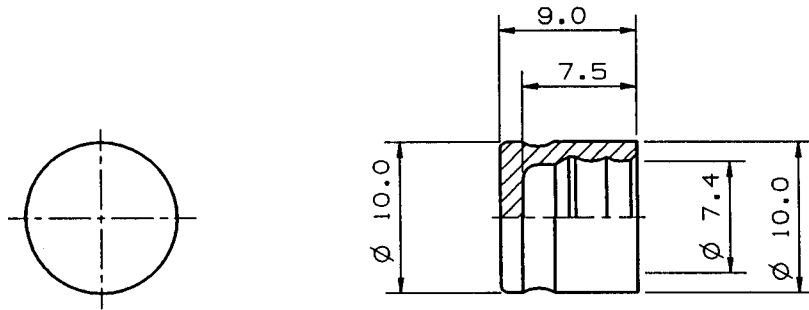


Figure 6 ⑦-2 Cap

Unit : mm

This datasheet has been downloaded from:

[www.DatasheetCatalog.com](http://www.DatasheetCatalog.com)

Datasheets for electronic components.