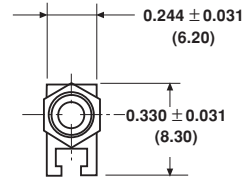
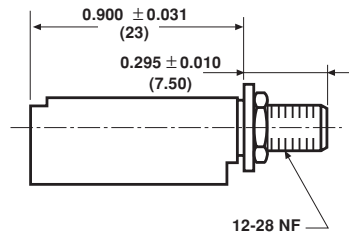
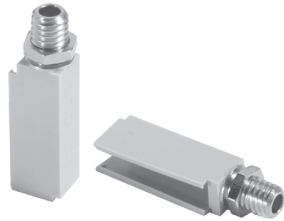


## Snap-On Panel Mount Adapters

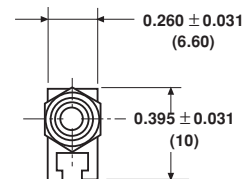
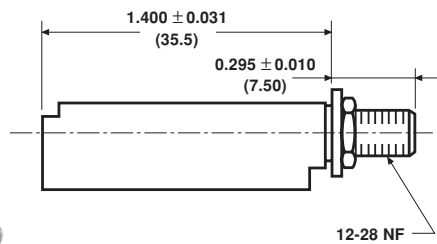
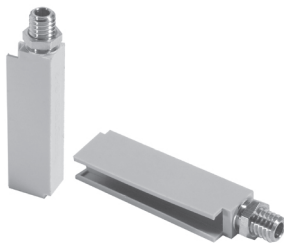
### DIMENSIONS in inches (millimeters)

#### ACTUAL SIZES

##### 6-1-0

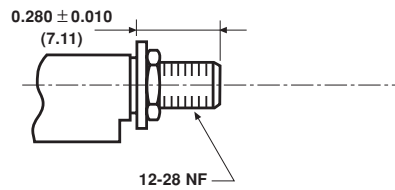


##### 6-2-0

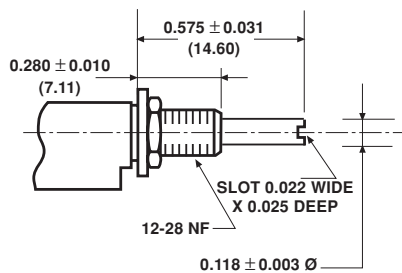


### AVAILABLE SHAFT CONFIGURATIONS

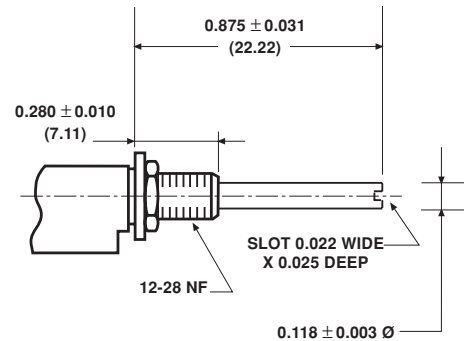
#### 6-1-1



##### 6-1-2



#### 6-1-3

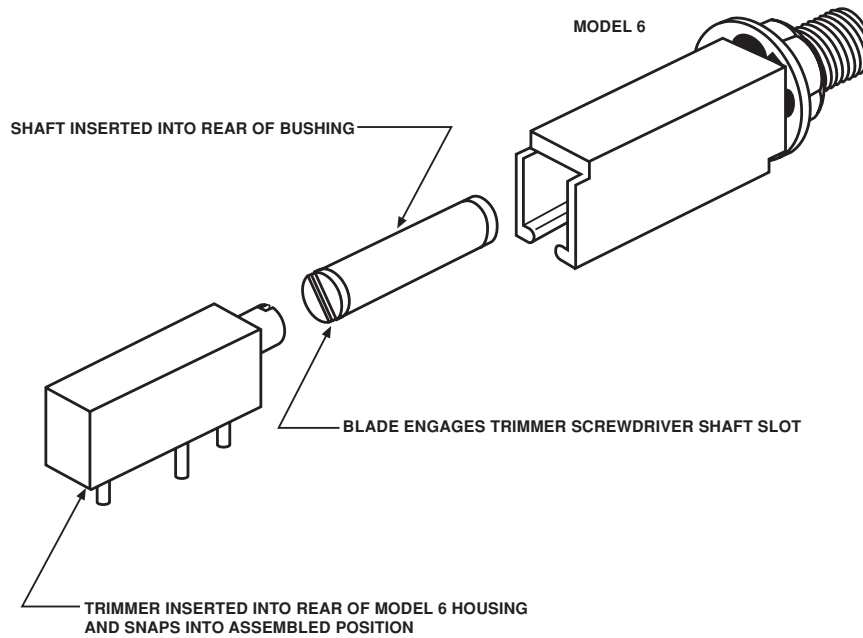


SHAFT DIMENSIONS APPLY TO 6-1-X AND 6-2-X VERSION

### ORDERING INFORMATION

6 MODEL	X TRIMMER SIZE	X SHAFT EXTENSION
Example: 6 - X - X	<ol style="list-style-type: none"> <li>1. Fits Vishay Spectrol Model 43 or Trimmer 0.750L, 0.190W, 0.250H</li> <li>2. Fits Vishay Spectrol Model 70 or trimmer 1.250L, 0.190W, 0.315H</li> </ol>	<ol style="list-style-type: none"> <li>0. No extra shaft</li> <li>1. Shaft flush with bushing</li> <li>2. 0.575 Shaft extension</li> <li>3. 0.875 Shaft extension</li> </ol>

Vishay Spectrol's standard 3/4" and 1 - 1/4" rectangular trimming potentiometers, the Models 43 and 70, may be easily panel mounted through the use of Vishay Spectrol Model 6 Panel Mount Adapters. The adapters are designed to convert these standard trimmer models into panel mount trimmers in a quick, convenient, and economical manner. Assembly with the trimmer is accomplished by snap-in, providing for minimal installation time.



<b>MECHANICAL SPECIFICATIONS</b>	
<b>PARAMETER</b>	
Construction	Molded polyester plastic
Bushing Material	Brass nickel plated
Bushing Hardware	Panel nut and lock washer
Shafts Available (Inches)	(1) Flush (2) 0.575 (3) 0.875

See photos and drawings for additional information

This datasheet has been download from:

[www.datasheetcatalog.com](http://www.datasheetcatalog.com)

Datasheets for electronics components.