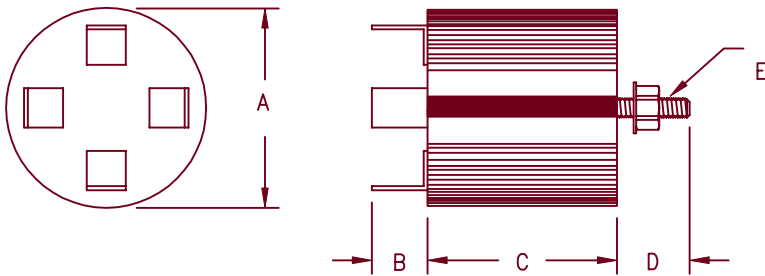


# Encapsulated Assemblies ER Series



Dimensions			
	Inches	Millimeters	Notes
A	1.31	33.3	
B	0.44	11.1	
C	1.06	26.9	
D	0.47	11.9	
E	---	---	1

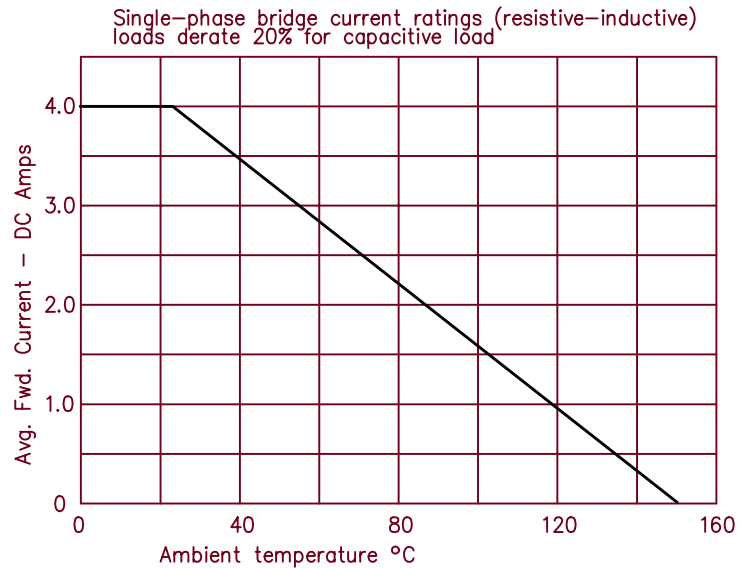
Note 1: 1/4"-20 Mounting Stud

Microsemi Catalog Number	Max. PRV Rating Per Circuit Arm
ER*2B1	200
ER*4B1	400
ER*6B1	600
ER*8B1	800
ER*10B1	1000
ER*12B1	1200
ER*14B1	1400
ER*16B1	1600

\*Add F for Faston Terminal  
\*Add L for Flexible lead (min length-4")

- Encapsulated in rounded case
- Single phase bridge
- PRV rating up to 1600 PRV
- Completely sealed, compact, corrosion and moisture resistant

Electrical Characteristics	
Circuit:	Single phase full wave bridge
AC Input:	Up to 1600 PRV
DC Output:	Up to 4 Amps DC
Surge Current	
Rating:	250 Amps peak for one cycle
Loads:	Resistive, Inductive, Capacitive, Continuous
Duty Cycle:	Continuous
Cooling:	Convection
Design Features:	Diodes housed in an epoxy sealed case. Faston terminals or flexible leads.



3-12-01 Rev. 1

This datasheet has been download from:

[www.datasheetcatalog.com](http://www.datasheetcatalog.com)

Datasheets for electronics components.